

SIEMENS

www.siemens.com/TrafficTools

Sittraffic Tools Map Export

Version 1.0

User documentation

Introduction

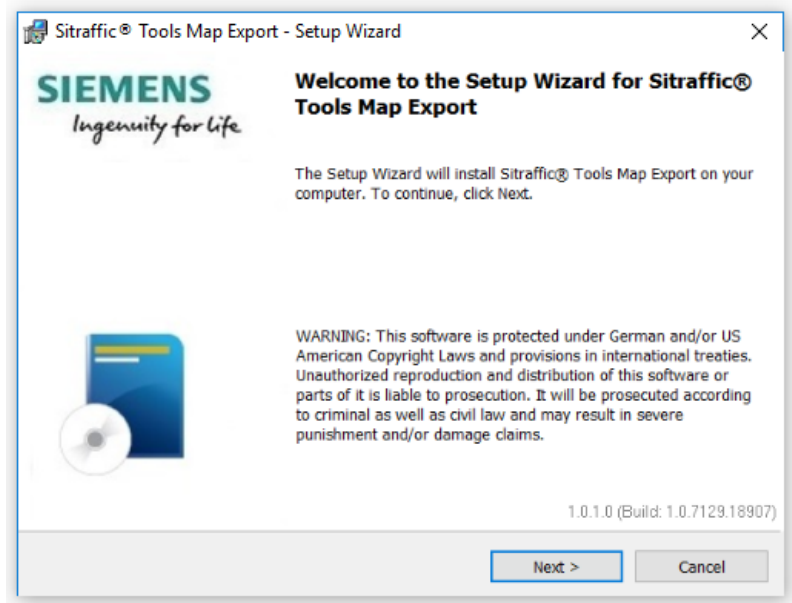
This user documentation describes how to export topology data out of Office by using the Sitraffic Map Export tool. The output of this converter tool is a GeoJSON file, which can be used to configure a map configuration of a Siemens RSU with the tool Map2x.

How to

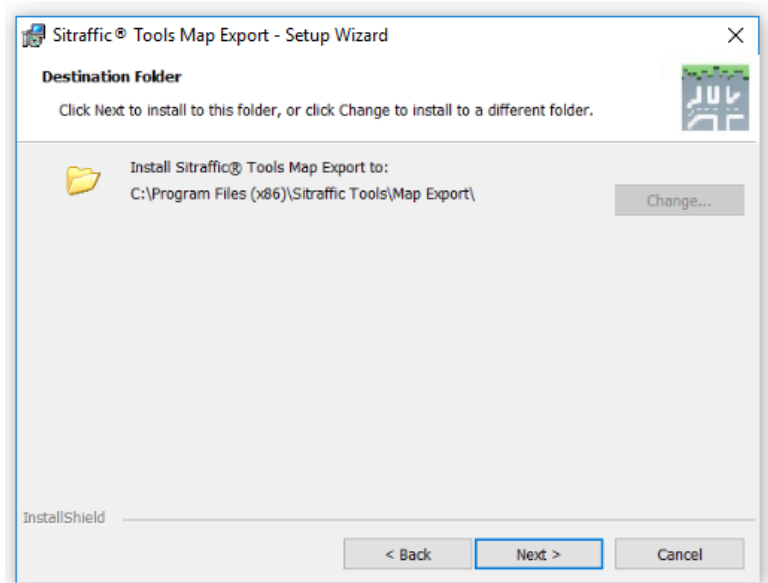
Setup

Install via double click on Setup .exe file:

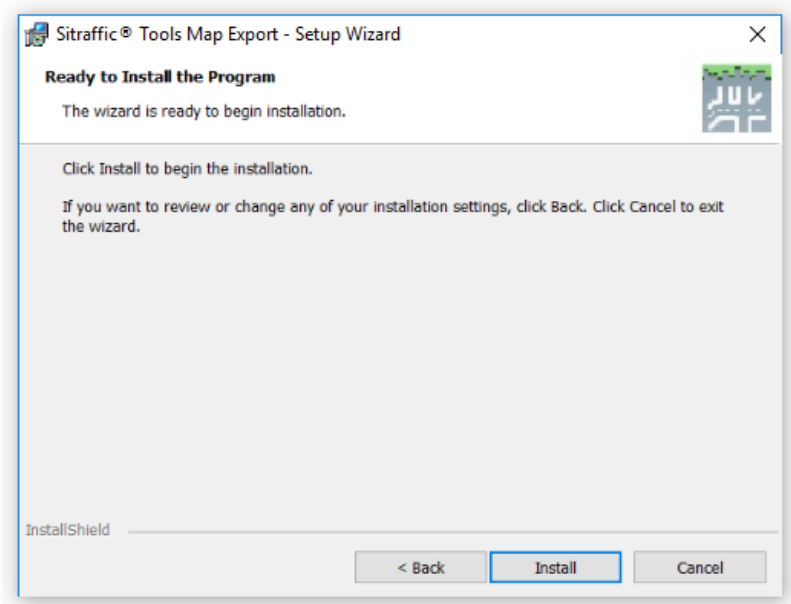
- click Next



- Select the installation path, default is recommended
- click next to start the installation



- and accept the prompt for Administrative Rights, if necessary
- click next



Usage of Sitraffic Tools Map Export

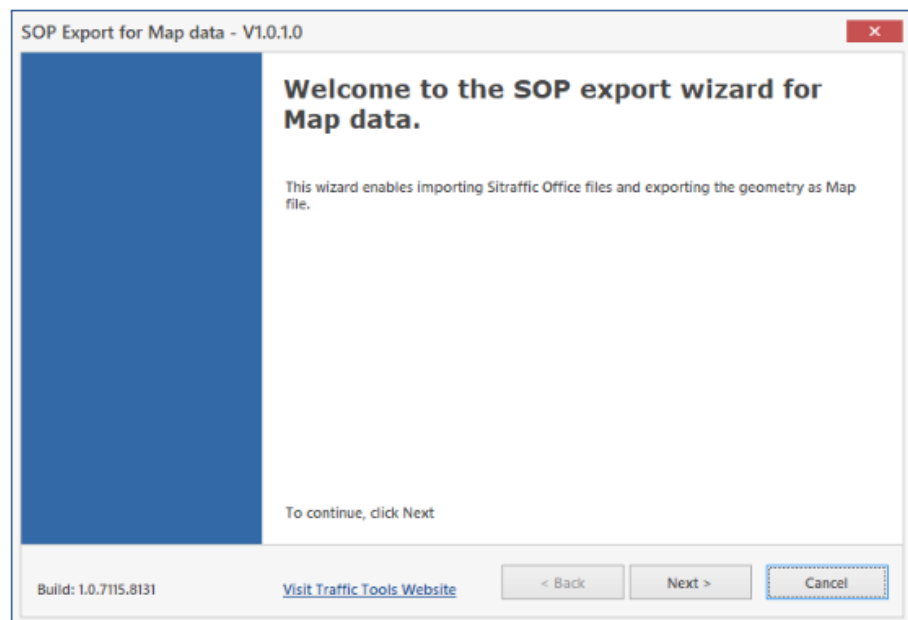
Please ensure that the following configurations have been done in the Sitraffic Office layout editor:

- Definition of the scale via setting the reference length
- Defining the north direction
- Definition of the geo reference point

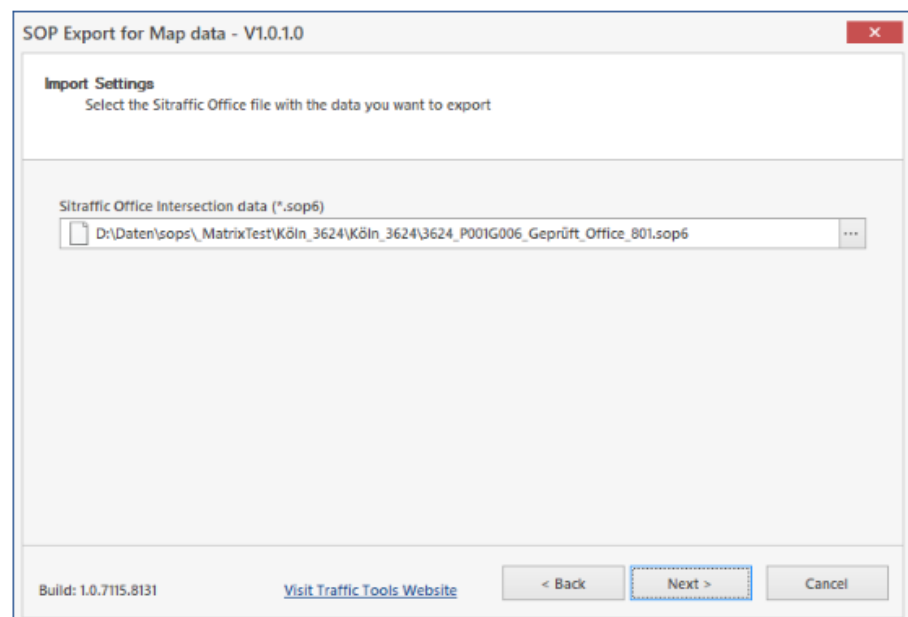
To create a GeoJson file out of the sop6 file please continue like this:

From the Programs Menu, start the *Sitraffic Tools Map Export* → "Run Map Export":

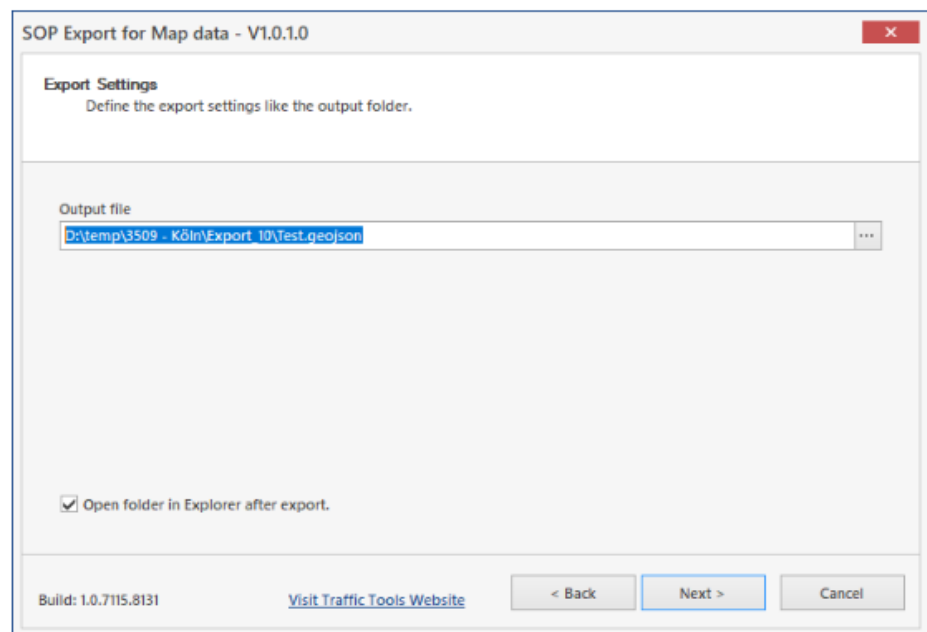
- A wizard will open up



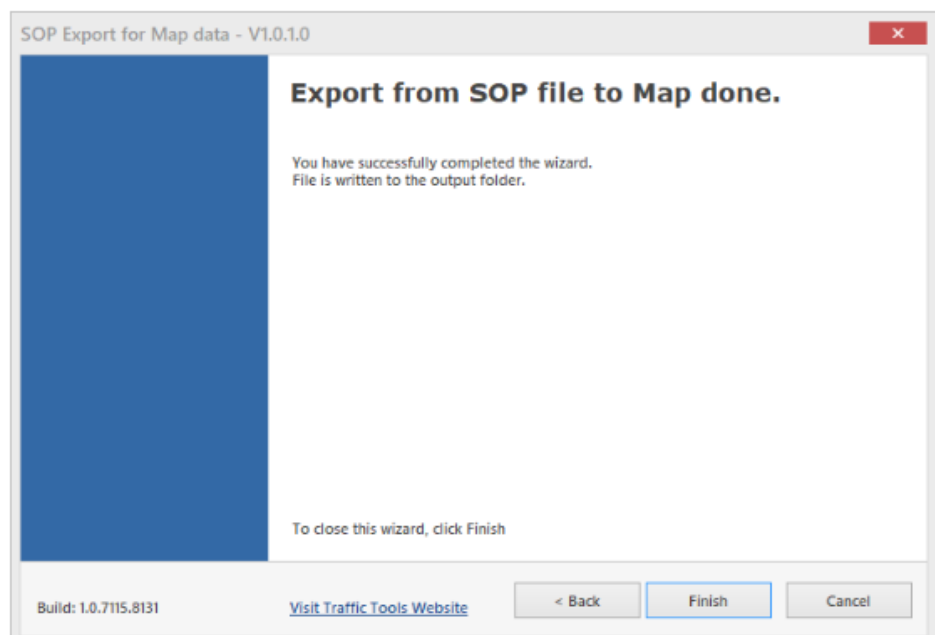
- select the input sop6 file



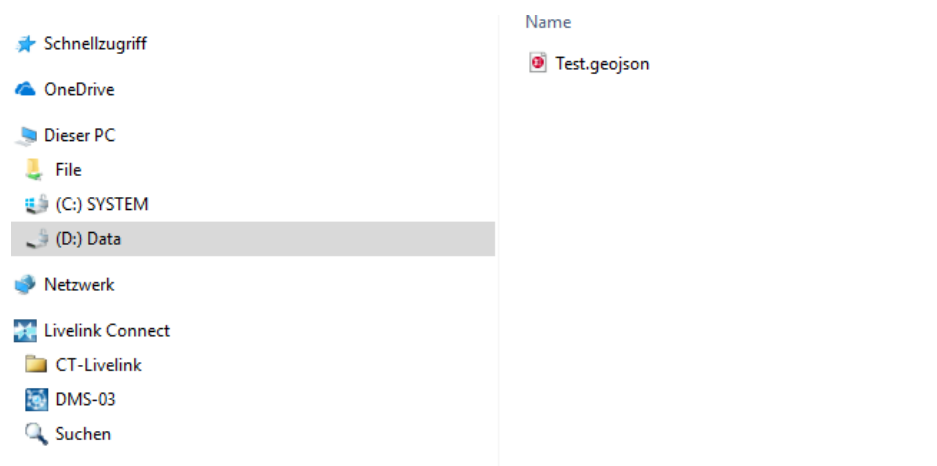
- configure output folder (by default, this should be the folder, where the input sop6 was selected)



- Finish Wizard

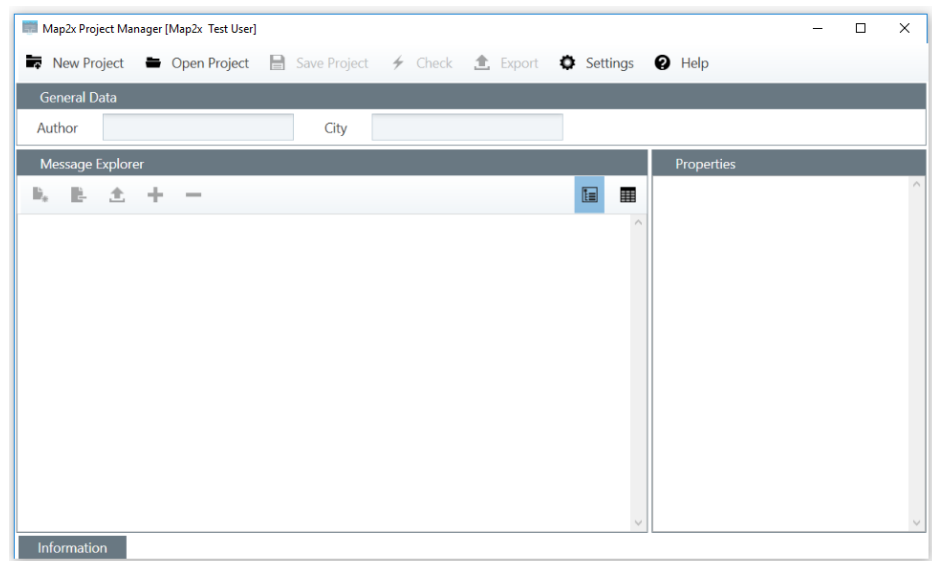


- the output folder will be opened

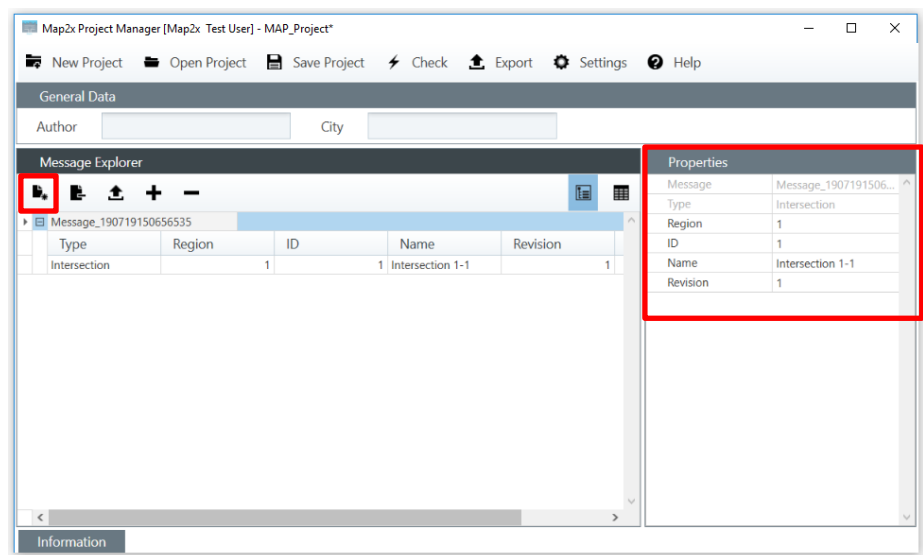


Quick introduction for import and usage in Map2x

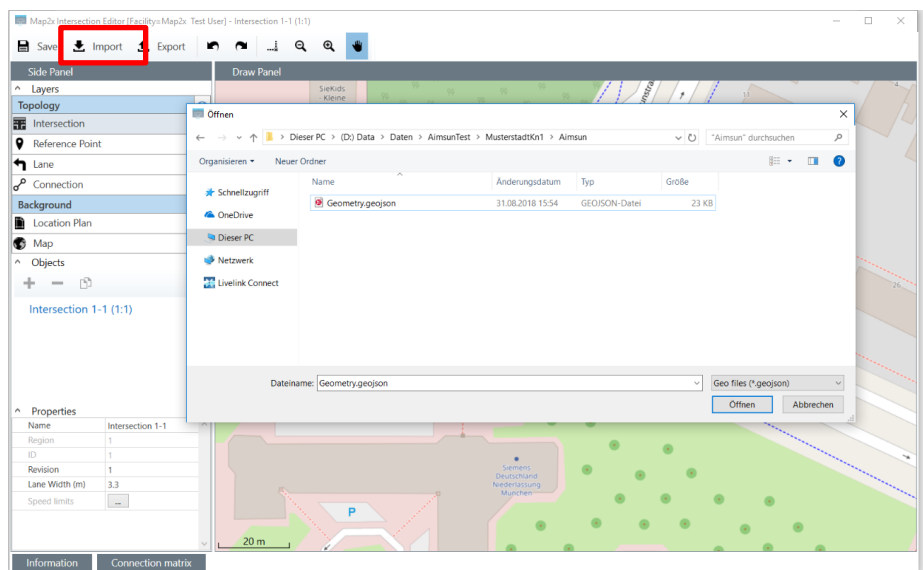
- Start Map2x



- Create new message and intersection



- Open intersection and import geoJSON



Restrictions of Sitraffic Office data import in Map2x Version 1.0

Import of reference point set in Sitraffic Office

The reference point set in Sitraffic Office is only used for the calculation of the layout plan objects and their coordinates but is not imported into Map2x. This is planned for version 2.0 of Map2x.

Definition of primary and secondary signal group connection reference

Signal group references of imported connections out of Sitraffic Office are always set to primary, because the relevant information for the differentiation is not available.

Therefore, the signal group references of all connections have to be checked and set in respect to the following rules:

Primary signal group:

The reference of the primary signal group has to be used for protected signalization (e.g. the dedicated right turner sg).

Secondary signal group:

The reference of the secondary signal group has to be used for permissive signalization (full circle sg for right turner).

Assignment of two signal groups for one turning relation

In case two signal groups are assigned to one turning relation in the layout plan of Sitraffic Office the following steps have to be carried out:

There are two vehicle signal groups assigned to a right turning connection (a full circle signal group and a right turner signal group)

In Map2x, both signal groups are assigned with one connection for each SG in the map definition. This must be edited manually, because in the map definition an unambiguous assignment has to be made. Therefore, one connection has to be deleted, so that only one consists and both signal groups have to be assigned to this connection as primary or secondary signal group

The reference of the primary signal group has to be used for protected signalization (e.g. the dedicated right turner sg).

The reference of the secondary signal group has to be used for permissive signalization (full circle sg for right turner).

Definition of lane approach attribute

In Version 1.0 of Map2x the approach attribute of the lanes is not set by the import of Sitraffic Office. This has to be edited manually.

This feature is planned for Map2x version 2.0.